



CCI Environmental Services, Inc.

Statement of Qualifications

CCI is a family-owned and operated company founded in 1989 that is dedicated to our client's success through unparalleled expertise and responsiveness- always exceeding expectations.

Office Locations:

Fayetteville, NC

3434 Black and Decker Road, Hope Mills, NC 28348 | 910.484.7000

Thomasville, NC

708 Martin Luther King Jr. Dr., Thomasville, NC 27360 | 704.273.1500

www.cci-env.com

TABLE OF CONTENTS



CCI Company Profile	2
Health and Safety	3
CCI Services Offered	4
• Asbestos Abatement	5
• Lead Abatement	7
• Mold Abatement	9
• Environmental Remediation	11
• Decontamination, Decommissioning, and Demolition ..	15
• Emergency and Disaster Response	17
• Industrial Services	19
• Waste Management	20
• Specialty Blasting Services	21
Current CCI Equipment and Fleet	24

COMPANY PROFILE

MISSION STATEMENT

CCI is dedicated to our client's success with unparalleled expertise and responsiveness always exceeding expectations.

OVERVIEW



CCI was founded in response to growing concerns and governmental regulations regarding environmental contaminants and the need for qualified and experienced companies to manage these issues. Since our inception in 1989, CCI has effectively addressed these concerns by tailoring our services to the specific needs of each individual client. For over 30 years, CCI and our clients have enjoyed mutual success by providing the most complete, quality-oriented environmental services in our market. We are dedicated to our client's success.

CCI's dedication to providing highly skilled, experienced, well-trained, and safety-conscious personnel allows us to react rapidly to any environmental situation with confidence. CCI provides services in environmental remediation, demolition, specialty blasting, emergency response, disaster and biological response, industrial services, waste management, asbestos, lead, and mold abatement.

Not only does each service have experienced and highly trained personnel, but the majority of CCI technicians and supervisors are cross-trained giving CCI the ability to meet the goals and address the concerns of your planned and unplanned projects of various scope and size. CCI's work force is comprised of industry professionals with backgrounds including environmental remediation, general contracting, environmental consulting, state and federal regulatory work, power generation, civil construction, health and safety, abatement and waste management.

CCI has been continually expanding its service areas and geographical reach, having performed projects so far in 24 U.S. States, Washington, D.C. and Puerto Rico.

VISION STATEMENT

CCI is an organization of quality-minded professionals dedicated to the complete success of each project through providing efficient, safe, and cost-effective environmental services.

HEALTH AND SAFETY

STANDARD OF SAFETY

CCI passionately believes in continuing education programs, especially in the area of safety. We have developed a comprehensive program, allowing our personnel to excel in the area of safety. CCI has many programs and policies in place to teach and remind our employees about the importance of a safe workplace. Everyone involved, from our corporate management, to project management, to our field staff, is responsible in playing an integral role supporting a strong safety culture.

Clients choose contractors who can deliver solutions for the best value and with minimum risk. Health and Safety is an essential component of our planning and execution of every project at CCI.

SAFETY PROGRAM

Safety Audits

Safety audits are held periodically at each project site to evaluate CCI's health and safety performance and find ways to improve it.

Compliance

Remedial operations are kept in strict accordance with OSHA and other applicable health and safety standards with a site health and safety plan being developed and approved for each project prior to mobilization.

Substance Abuse Policy

CCI promotes and encourages a drug-free work environment. Our corporate policy requires pre-employment drug screening. Employees may be subject to a random drug/alcohol screen to ensure a drug/alcohol-free workplace. CCI also participates in the Pipeline Drug & CCS Testing Program.

Key Training

- Blood Borne & Airborne Pathogens IDC
- First Aid/CPR/AED Instructor Development Course
- Hazcom Compliance Team
- HAZWOPER
- Lift Truck Operator Instructor Development Course
- Lockout/Tagout Training
- OSHA 510
- State Certification Instructors for HAZMAT & Confine Space Entry



CCI SERVICES OFFERED

INTRODUCTION

Since 1989 CCI has developed a variety of different services to fulfill the expanding needs of our clients and meet current regulatory requirements. The pages that follow provide an overview of CCI's superior and unique project experience and expertise in dealing with a variety of different challenges and environmental hazards.



Pictured above is Mark Vestal. Mark Vestal is the founder and CEO of CCI.

ASBESTOS ABATEMENT

OVERVIEW

Since 1989 CCI has been a leader in Asbestos Abatement. Our experience, expertise, and punctuality along with our determination to ensure client satisfaction have pushed us to the forefront of the industry. By working closely with the client, CCI has had the ability to complete thousands of abatement projects in occupied office buildings, universities, hospitals, hotels, retail/commercial, and industrial facilities with very minimal interference to the day-to-day operations of the client.

Our asbestos project managers, supervisors, and technicians have afforded CCI and our clients mutual success. Their commitment to safety, up to date training, and tireless work continually ensures that CCI remains a step ahead of our competition, and the first call of our clients.



SELECT PROJECT EXAMPLES

Pulp and Paper Processing Facility, Valdosta, GA

CCI's work at this site included the complete abatement of two five-story recirculation boilers and cascades. An entire building was contained, steel casing was cut, and multiple types of asbestos-containing material (ACM) were removed to allow demolition of the entire structure. Innovative approaches to containment, work scheduling, removal techniques, and waste handling were required to execute this job safely.

Central Chemical Superfund Site, Hagerstown, MD

CCI was contracted to remove contaminated dust and debris from 17 structures at the Central Chemical Superfund Site in Hagerstown, MD followed by demolition of the buildings. The site was used primarily as a pesticide formulation (DDT) facility. CCI performed an asbestos survey and pre-characterized the wastes prior to commencing site operations. CCI started by removing the asbestos followed by gross removal of the contaminated dust. CCI also configured a super-vac equipped with a High Efficiency Particulate Filter (HEPA) exhaust and a plenum system to equip the technicians with a dust removal system.

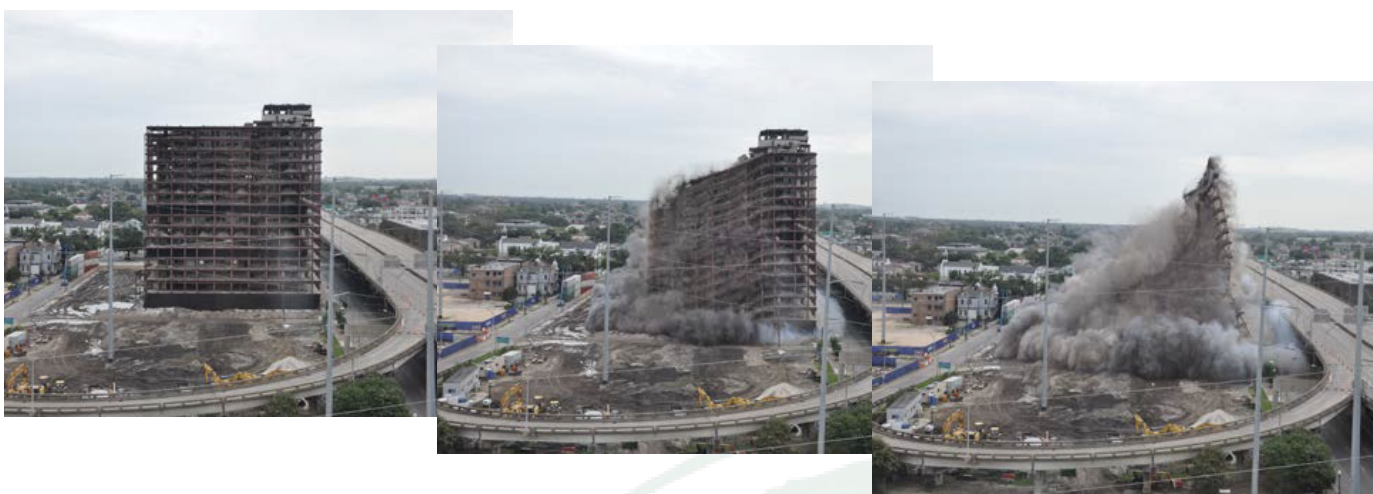
Hurricane Ike, Orange, TX

CCI was contracted to perform emergency abatement at multiple facilities after Hurricane Ike caused damage to oil facilities across the state, which included mobilization of 150+ employees.

ASBESTOS ABATEMENT

Grand Palace Hotel, New Orleans, LA

Pictured below is the Grand Palace Hotel. CCI removed non-regulated asbestos from the floors of the old Grand Palace Hotel, which was in the process of demolition and slated for implosion. In order to access the asbestos located between the floors around the outside walls of the hotel, mast climbers were built for easier and safer access to the building. Three heavily traveled streets and the interstate were located in very close proximity to the Grand Palace Hotel. The building was later successfully imploded.



Duke Energy Corporation, Wachovia Center, Charlotte, NC

Interior demolition of approximately 24,000 SF of floor space. Demolition of all interior walls (approximately 37,800 SF drywall), 23,000 SF ceiling tile, and 10,000 SF carpet. Because of asbestos containing fireproofing above the ceiling, all work was performed within a negative pressure enclosure. Additional removal and disposal of approximately 66,300 SF of fireproofing, 300 SF of Vitrified Floor Tile (VAT) & mastic, 400 SF of drywall w/ joint compound, 1,850 SF of Concrete Masonry Unit (CMU) wall, 1,700 LF of HVAC duct and Variable Air Ventilation (VAV) boxes, all duct and air handling equipment from the Air Handling Room, ten (10) fire doors and 50 LF of thermal system insulation from pipe.

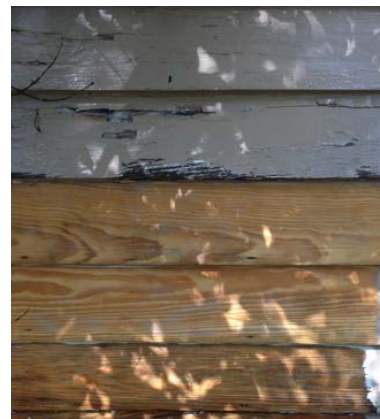
Meridian Naval Base, Meridian, MS

CCI's work at this site included the excavation, loading, transportation and disposal of an estimated 2,200 CY of soil contaminated with asbestos debris. This project involved the Abatement and Remediation groups. Additionally, CCI brought in water trucks per regulatory requirements using wet methods for excavation and loading of contaminated soils to excavate and load the contaminated soils per regulatory requirements using wet methods.

LEAD ABATEMENT

OVERVIEW

Over the past 30+ years, CCI has customized its services to meet the increasing regulations and suit the specific needs of each client. Because of the prevalence of lead contamination in such sensitive areas as schools, hospitals, universities, industrial facilities and multi-family housing, CCI realized the strong need for qualified, educated, and concerned personnel. CCI utilizes only the most advanced and industry-proven methods of mechanical and chemical stripping, abrasive and non-abrasive, scraping, blasting/cleaning, and component removal.



SELECT PROJECT EXAMPLES

Chemical Company, Mt. Holly, NC

This project involved the removal of lead-based paint from an outside canopy and support columns utilizing needle guns equipped with an explosion-proof, HEPA-filtered vacuum collection system. This was due to the close proximity to volatile storage tanks containing ethylene oxide. Non-sparking needles were used in the removal of the lead-based paint.

NCDOT Graffiti Removal

Since approximately 2010, the NCDOT has contracted CCI to remove graffiti from bridges, underpasses, sound walls, roads, bill boards, and other structures across the state of North Carolina. Below are some pictures that show how easily CCI's Farrow-System blasters with dry ice media can remove graffiti.



LEAD ABATEMENT

Cargill Bin 53

CCI removed lead paint from a 4,000 SF surface area on a 30,000 SF above ground storage tank. After blasting the tank, CCI pressure washed the tank to ensure that no blasting media was left on the tank. Analytical data was used to determine the waste could be disposed of as non hazardous.



525 Lady Street-Room #2 and #15

This project consisted of the following: setting up containment and ensuring a safe blasting area, removing lead based paint from a brick surface in two rooms using farrow blasting machines, and disposal of the remaining contaminated lead paint chips.



MOLD ABATEMENT

OVERVIEW

CCI has specialized in mold removal for over 20 years. In that time, CCI gained a reputation for excellence in mold abatement by providing exceptional service in many different work environments. CCI and our clients have had much success in this area through the use of certified, experienced managers, supervisors, and technicians dedicated and committed to the project from start to finish. At the root of any mold problem is a moisture problem. CCI embraces the fact that to remove all mold generation; the moisture must first be eliminated at the source. Once the moisture problem is resolved, mold abatement may take place.

SELECT PROJECT EXAMPLES

Hurricane Katrina Evacuee Center, Anniston, AL

As a subcontractor to Shaw E&I, CCI responded under an emergency response scenario to aid in the build-out of former military dormitories to house approximately 2,000 Hurricane Katrina evacuees. CCI mobilized management personnel within half a day of the initial request for response and within 48 hours mobilized 240 removal technicians to perform the mold removal of more than 600,000 square feet of living space. In addition to the surface area mold removal, CCI managed the removal of mold and the cleaning of the HVAC systems throughout the facilities. The original three-week schedule was compressed to one week. CCI maintained the schedule and completed all tasks ahead of schedule and budget.



Darlington High School Mold Remediation, Darlington, SC

Darlington High School in Darlington, SC opened up their doors two days before school started and discovered extensive mold growth throughout the school. CCI moved quickly and efficiently to abate the mold in the high school through ice blasting techniques and removing contaminated drywall. CCI was able to work with the high school staff to quickly open sections of the school so that classes could resume on time.

MOLD ABATEMENT

Building 487 Mold Remediation, Pope Air Force Base, NC

Building 487 is a hotel utilized to house Air Force personnel during assignments at Pope AFB (currently known as Pope Army Air Field). A water pipe burst on a weekend and was not discovered until early the next Monday morning. CCI was contracted to complete the mold remediation of this facility and to prepare the facility for renovations. This project included the removal, cleaning, and storage of the salvageable hotel furniture.



CCI has assisted numerous entities with mold abatement concerns including:

- Flood-Impacted Areas
- Historic Facilities
- Hospitals and Universities
- Industrial and Commercial Facilities
- Multi-Family Housing
- Residential Facilities

ENVIRONMENTAL REMEDIATION

OVERVIEW

CCI's environmental remediation staff has extensive experience in developing programs, means and methods, which include appropriate corrective action plans that provide our clients with cost-effective solutions. Through the use of sound remedial management methods, technical expertise, and regulatory awareness, CCI is able to provide our clients with the services needed and the confidence in knowing that their concerns are being addressed and their goals met.

Environmental remediation services include:

- Air knifing/ soft digging
- Brownfields remediation
- Environmental civil construction
- Excavation and management of contaminated non-hazardous and soils
- Installation and maintenance of erosion and sedimentation control measures
- Landfill capping and closures
- Lagoon closure
- Shoring installation
- Soil stabilization/ solidification
- Remediation system installation
- Underground and aboveground tank closures and removals

SELECT PROJECT EXAMPLES

Ward Transformer Superfund Site, Raleigh, NC

For this multi-year EPA Superfund site, CCI performed the excavation, power screening, and solidification of over 400,000 CY of PCB-impacted soils as part of the Phase I Emergency Removal Action Plan (RAP). Soils were either thermally treated on-site or transported to Subtitle C or D landfills based on the concentrations. CCI was also responsible for the designing and implementation of a storm water and erosion control plan for the 20+ acre site which contained multiple streams, crossed beneath highways and was partially on RDU Airport property. Other major tasks included clearing and grubbing, building abatement and demolition, UST and AST removals, E&SC measures, stream restoration and site restoration. CCI worked closely with the general contractor, subcontractors, the EPA, the environmental consultants and the PRP Groups involved.



ENVIRONMENTAL REMEDIATION

Swannanoa DJJDP Property Landfill Remediation, Swannanoa, NC

Swannanoa DJJDP Property Landfill was a project managed under the NC DEQ Pre-Regulatory Landfill Unit. This landfill remediation was performed under an engineering firm and was approximately a 6 acre site. CCI performed clearing and grubbing, constructed an access road, installed E&SC features, relocated waste onsite, installed a marker layer, backfilled, capped with calay soil and restored with hydroseeding.

Power Utility Steam Station, Mt. Holly, NC

As part of decommissioning activities for a large power utility's Steam Station in central NC, under guidance through the environmental consultant, CCI excavated, transported, and disposed offsite of approximately 13,000 tons of petroleum-impacted soils, creosote timber piles, and concrete at former Combustion Turbine and AST areas located at this facility. The work also included installation of E&SC, the removal and disposal of asbestos-wrapped fuel oil piping, wastewater transportation and disposal, breaking of and disposing of a thick concrete foundation for a former transformer, placing and compacting structural backfill, grading, and site restoration.

Power Utility MGP Site Remediation, Spartanburg, SC

CCI performed remediation of a former Manufactured Gas Plant (MGP) site located in Spartanburg, SC for the environmental consultant, which was impacted with coal tar residual liquids and sludge in site soils on a creek floodplain. CCI excavated and removed an estimated 6,700 tons of coal-tar impacted soils and debris from the approximately 2.5 acre site. Impacted materials were manifested and transported to a Subtitle D landfill that accepted special waste. The project also included installation of E&SC measures, construction of gravel access roads, clearing, removal of overburden, pumping of impacted groundwater and sludge, onsite water treatment and discharge under NPDES, installation of trench boxes, installation of an HDPE infiltration gallery monitoring well network, backfilling and compaction, amended backfill placement with sand, granular activated carbon and Tersox, placement of topsoil, hydroseeding.



ENVIRONMENTAL REMEDIATION

Landfill Design and Construction, Fort Rucker, AL

CCI completed a Performance-Based Contract (PBC) for environmental restoration services at the U.S. Army Aviation Center at Ft. Rucker. The scope of services included the design and implementation of a 30-acre former landfill cap (SWMU 2d). CCI developed a Corrective Measures Implementation Plan for the Alabama Department of Environmental Management, submitted the NOR permit, and prepared a Construction Best Management Practices Plan for the landfill cover and borrow source.

Construction of Engineered Caps, Mt. Pleasant, TN

CCI was contracted for the construction of engineered caps over former phosphorus burial areas. The project was divided into multiple Contractual Areas. By dividing the Contractual areas, the consultant and client were able to manage the logistics to multiple work sites requiring the same fill soil and haul roads. Following site preparation, CCI personnel placed fill to bring the surface to cap elevations, placed a clay barrier layer, placed vegetative soil cover, re-vegetated disturbed areas, performed installation and maintenance of soil and erosion control items, re-vegetated surfaces; and provided surface drainage improvements.

PSNC Site #2 MGP Facility, Raleigh, NC

CCI excavated, loaded, transported and disposed of 10,200 tons of coal-tar residual contaminated soil from this Manufactured Gas Plant (MGP) site. CCI also contained, transported and disposed of 20,700 gallons of impacted water. To complete the project, CCI imported over 10,125 tons of fill material, backfilled, compacted and restored the site.



ENVIRONMENTAL REMEDIATION

Landfill Gas Cut-Off Trench, Eastern NC

CCI installed an approximately 160' length landfill gas cut-off trench at a closed MSW landfill in Eastern NC near a landfill property boundary to monitor and vent landfill gas. The work included E&SC measures, excavation and benching of an estimated 7,500 tons of soil, anchor trench installation, installation of a 45-mil HDPE liner and Geocomposite layer, gravel-filled upper layer wrapped with geotextile, perforated HDPE piping and solid pipe vent risers with wind-driven turbines, backfilling, compaction and site restoration. Installed to a depth of approximately 30' bgs.



Stormwater Lagoon Cleanout, Central NC

CCI completed the cleanout of accumulated non-hazardous sediments in an industrial wastewater and stormwater lagoon at compressed gas plant in Central NC. CCI provided water pumping and temporary storage for the plant to keep all operations functional while the work was being conducted. CCI solidified the non-hazardous lagoon sediments in-place with wood flour and loaded the solidified sediments and overgrown vegetation into trucks for offsite disposal at an MSW landfill. The lagoon banks were restored with seed/straw and matting. The inlets were also restored with additional riprap and ABC stone.

Cliffside Mills Landfill Remediation, Mooresboro, NC

Cliffside Mills Landfill work was conducted for two engineering companies as part of the North Carolina Pre-Regulatory Landfill Program which included clearing and grubbing of an abandoned 11 acre landfill, along with sub-grade preparation and excavation/relocation of 12,500 cy of on-site debris. The Site Restoration Phase included importing and placement of 16,000 cy of backfill material along with detailed E&SC features and grading, placement of debris marker layer, seeding, matting, and mulching. Final Phase included removal of all sediment ponds and other E&SC items, extension of a riprap drainage channel, seeding, matting, and mulching.



DECONTAMINATION, DECOMMISSIONING & DEMOLITION

OVERVIEW

CCI offers a variety of services in the area of Decontamination, Decommissioning, and Demolition. Proper work plans are developed and tailored to meet site-specific requirements and conditions. Both total and selective demolition services are performed by CCI. These services range from complete demolition of large structures to selective or partial demolition activities for restoration or renovations. Services include facility decontamination and decommissioning. Whether from hazardous substances or years of use, a systematic decontamination of a property can be completed with minimal interference of daily operations. In conjunction with the decontamination process, CCI performs systematic decommissioning of facility components and the transportation and disposal of waste and treatment of all rinsing agents and waste products.

Decontamination, Decommissioning, and Demolition services include:

- Mold decontamination abatement
- Interior select demolition
- Complete demolition

SELECT PROJECT EXAMPLES

Lake Front Airport, New Orleans, LA

CCI was hired to perform selective interior demolition and historical salvage on designated furnishings throughout the two story historical building. The project included the removal and disposal of interior drywall walls and associated studs back to the original finishes, drywall ceilings and associated support systems, interior floor finishes and associated adhesives other interior finishes such as wainscot, cove base, crown moldings and door & doorjamb (where not slated for salvage) and Mechanical Electrical & Plumbing (MEP) back to the nearest point of connection. CCI perform removal for salvage interior furnishings such as toilets/urinals sanitized, toilet stalls/doors, 125 each door/doorjamb and overhead transoms. The project was completed within 6 weeks.

Central Chemical Superfund Site Decontamination and Demolition, Hagerstown, Md

CCI was contracted to decontaminate and demolish 17 structures and remove dust and debris contaminated with pesticides and fertilizers at the Central Chemical Superfund site in Hagerstown, MD.



DECONTAMINATION, DECOMMISSIONING & DEMOLITION

US Customs House Selective Demolition, New Orleans, LA

This renovation was due to extensive damage caused by Hurricane Katrina. CCI was contracted by Woodward Design Build, for the interior demolition at the US Customs House, New Orleans, LA. The interior demolition included demolition and removal of ductwork, air handlers and plumbing. It also included removal of interior partition walls, ceilings, floor coverings, doors and frames, portions of rotten wood flooring, wall tile, existing former light shafts, ceiling removal on certain floors, demo and removal of HVAC concrete housekeeping pads. Demolition of multiple brick walls was also accomplished. Due to the historical nature and value of the US Customs House, much of the demolition had to be done by hand. Trash Chutes were constructed on the outside of the building and ramps were built on the inside for debris to be dropped from the 2nd, 3rd and 4th floors. In order to preserve the pavers /sidewalks, CCI utilized plywood as a covering for protection of the pavers / sidewalks.

Propane Facility Decontamination and Demolition, Chesapeake, VA

The 38-acre former Smith Douglas bulk fertilizer facility located on the Elizabeth River in Chesapeake, Virginia shipped and received various agricultural and commercial fertilizers by barge, rail, and truck traffic. The project goal was to restore the property for future development by the Peak Shaving LNG/Propane distribution facility. CCI's scope of work consisted of utility abandonment, asbestos abatement, building demolition, barge dock demolition, rail service demolition, waste sampling and packaging, mass excavation, soil segregation and load-out, erosion control feature installation including sediment basins and diversion dikes, UST removal and closure, and backfilling/compaction/finish grading operations including site restoration.

Pulaski Church Abatement and Demolition, Pulaski, VA

CCI performed asbestos abatement and full demolition for an approximately 30,000 SF church building in Pulaski VA. Building was demolished due to a nearly total structure fire. All ACMs were removed and disposed of in accordance with state and OSHA regulations. Demolition included complete structure removal, including building slab, concrete footers/foundation, and basement walls. Unsuitable soils were removed and disposed of offsite. All materials were properly segregated and disposed of or recycled. Site was graded to drain. Demolition work was completed in 3 weeks, ahead of the 5 week projection and under budget.



EMERGENCY, DISASTER & BIOLOGICAL RESPONSE

OVERVIEW

CCI's emergency response division is always ready and available 24/7. Our 24 hour spill hotline number is 1-888-624-6555. CCI's emergency response always finds the most efficient, safest, and most cost effective means to respond. Our emergency administrative team and responders can be dispatched quickly and effectively across the country. All of our emergency responders have current 40 hour OSHA HAZWOPER training and current 8-hr OSHA refreshers, confined space training, specific HAZMAT training, specific hazards and tasks training so that we are able to provide competent responses to any size or type of hazardous material. CCI's experience, well trained emergency response personnel allows CCI to deliver premiere service to its customers.

Emergency disaster and biological response services include:

- Biohazard decontamination and cleanup
- Chemical and oil spills
- Infectious disease response
- Natural disaster response
- Plant disaster response
- Product recovery
- OSHA level A-D responses
- Structural drying and water mitigation
- CCI is also maintains a U.S. Coast Guard oil spill response organization (OSRO) classification
- Response to biological emergencies including the Avian Bird Flu, the Ebola virus, and Anthrax.



SELECT PROJECT EXAMPLES



Pilgrim's Pride – Ammonia Explosion, Marshville, NC

CCI was among the first to begin clean-up from the explosion at the Marshville Plant. CCI responded with HAZMAT technicians and specialists, performing clean-up and water management. CCI set up and ran the decontamination unit for the site.

Pipeline Release, Yellowstone River

CCI provided personnel and equipment for a petroleum pipeline release on the Yellowstone River. CCI responded with over 40 personnel to assist in the product recovery effort.

BP Deep Water Horizon Gulf Spill

CCI provided a large labor force and management across three states for the BP Oil Spill cleanup from May of 2010 through the end of 2011.

EMERGENCY, DISASTER & BIOLOGICAL RESPONSE

Sam Houston Electric Cooperative (SHECO) Transformer Recovery/Remediation

CCI was contracted to assist SHECO in the recovery and remediation of PCB contaminated transformers and non-PCB contaminated transformers. During Hurricane IKE, SHECO's power grid received significant damage. SHECO still had a low percent of its pole-mounted transformers that were suspect PCB-containing. CCI set up a staging and collection area for the assessment and sampling of transformers as they were picked up by CCI. The first priority was to comb the entire system for transformers damaged and left on sites for pickup. The transformers were GPS located, assessed for type and contamination, spills were located and marked, pictures of the transformer and the spill were taken, and then the transformers packaged and load on a transport vehicle. The transformers were then taken to the collection area and given a unique number. If the transformer was suspect it was sampled for confirmation. Once the samples were returned the transformers were tagged and segregated for disposal. The soil was remediated in accordance with the sample results and/or assessments of the transformers. If the transformer contained PCBs the excavation had confirmation samples taken prior to backfilling. The soil was segregated in containers for disposal. CCI provided all FEMA Recovery documentation for SHECO.



INDUSTRIAL SERVICES

OVERVIEW

Fast turn around and quality of service requires experience and the most advanced technologies to stay on demanding schedules. Whether in a plant, on the water, or along a pipeline CCI offers a comprehensive line of Industrial services to meet our client's needs. CCI maintains a staff of highly qualified and trained personnel utilizing innovative technologies to manage our client's projects.

SERVICES

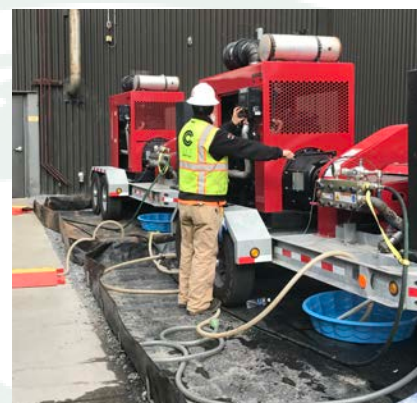
Industrial Vacuuming

- Vacuum trucks & tankers
- Super Sucker
- Vac-Tron trailer
- Hydro-blasting (up to 40,000 psi, ultra high pressure)
- Hydro excavation
- Confined space cleaning
- AFVR



Decontamination and Cleaning

- Process and storage tank cleaning
- Confined space cleaning
- Chemical cleaning
- Cooling towers & boilers
- Power plants and paint booths
- Fuel oil line cleaning
- Conveyor systems
- Facility decommissioning
- Video inspections



ROVVER-X Mobile Pipeline Camera System



WASTE MANAGEMENT

OVERVIEW

CCI's knowledgeable and experienced team of Waste Management Professionals routinely provide our clients with a compliant, hassle-free and cost-effective means for handling their waste.

Waste management services include:

- Hazardous and non-hazardous waste transportation and disposal
- 10-Day Transfer Facility
- Bulk non-hazardous waste solidification and disposal
- Petroleum and petroleum contact water bulking and recycling
- HAZCAT services for unknown containers
- Lab-Pack services
- Sludge management and disposal



SPECIALTY BLASTING SERVICES

OVERVIEW

In an effort to keep up with the growing demand, CCI offers additional Blasting Services. These services include the Farrow “Slurry Blasting” System which utilizes a green technology by using recycled media and low pressure steam. This system provides a well contained blast with no dust exposure. Cryogenic “Dry Ice” Blasting uses a combination of recycled Carbon Dioxide pellets which are ejected under pressure and is non abrasive, non conductive, non corrosive & EPA, FDA and USDA approved cleaning method.

Sponge Jet “Surface Preparation” Technology is commonly called Sponge Media Blasting and uses an open-celled, water based polyurethane impregnated with abrasives. The performance of this system is equal to sandblasting but creates about 80% less dust and is recyclable. Dry Ice Blasting is a combination of reclaimed CO2 from our environment and from local commercial industries such as Anheuser Busch, Frito-Lay and other large manufacturers. At -109.3 Degrees below zero, the Dry Ice penetrates the product that is being removed and proceeds to the substrate where it expands 800% gently lifting the unwanted matter away from the surface. There is no secondary waste management which allows us to clean in controlled environments. Every day CCI is discovering new applications for our blasting technologies.

CCI offers the following blasting services:

- Crushed glass blasting
- Dry ice blasting
- Sponge blasting
- Hydro blasting
- Removal of lead paint, graffiti, rust, corrosion, etc.

The following are some examples of our blasting projects.

SELECT PROJECT EXAMPLES

Wake Forest Granite Cleaning, Wake Forest, NC

CCI cleaned a Granite wall for Wake Forest University using the Farrow Blasting System. Over time the wall became discolored.



SPECIALTY BLASTING SERVICES

Historic Home Blasting, Raleigh, NC

The abatement and industrial blasting group of CCI recently completed lead-based paint abatement and crushed glass blasting to uncover the true beauty of this historic home in downtown Raleigh, NC. The photos below show the containment set up and the finished product. CCI's industrial blasting group can complete removal and disposal of paints, corrosion, rust and other coatings from environmentally sensitive and historically significant structures such as these through a variety of blasting media.



Crestview Acres Soot Removal, Monroe, NC

CCI used ice blasting technology to remove soot off of a home that had experienced extensive fire damage. Pictured to the right is a fire place that has been partially cleaned with CCI dry ice blasting system. CCI has been very effective at removing soot in commercial and residential settings over the past few years.



SPECIALTY BLASTING SERVICES

BLASTING LINKS

Farrow-Removing Lead Based Paint from Steel Beam

<https://www.youtube.com/watch?v=LsYFFOtEPk0>

Farrow-Graffiti Removal Charlotte, NC

<https://www.youtube.com/watch?v=eIpFLB424e0>

Farrow Blasting Concrete

<https://www.youtube.com/watch?v=NhgnDweqcaM>

Farrow Blasting Paint from Steel

https://www.youtube.com/watch?v=8R6yuOJg_Fo

Cryogenic Ice- Removing Mold and Contamination from Ceiling

<https://www.youtube.com/watch?v=LTpTVIKqFmE>

Cryogenic Ice Blasting Tar from Fiberglass Tank

<https://www.youtube.com/watch?v=Nai0F4LdXhA>

Cryogenic Ice-Removing Paint from Historic Brick Building

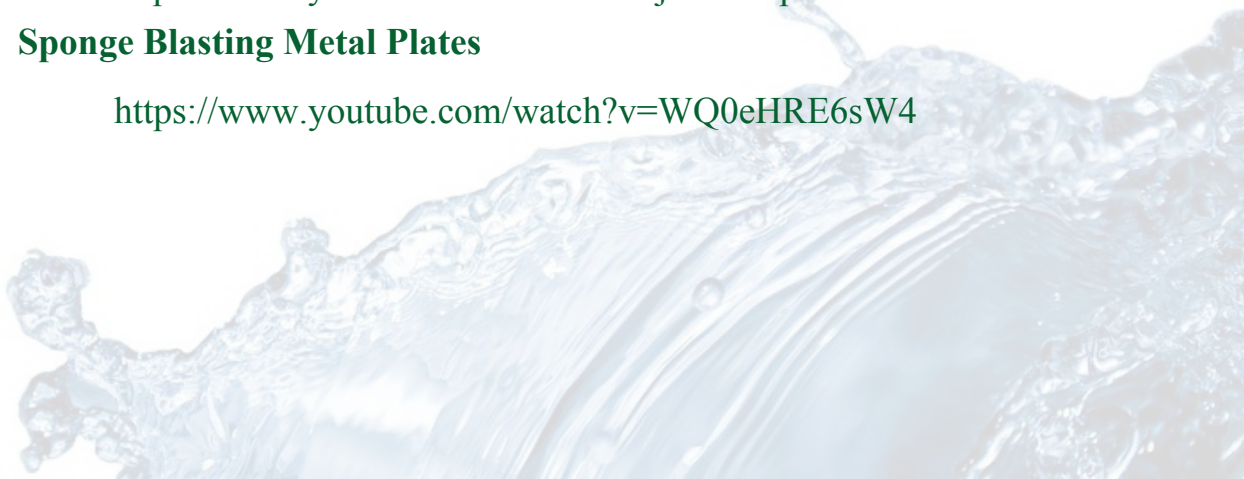
<https://www.youtube.com/watch?v=BGGh8aiIPMw>

Cryogenic Ice Blasting Rubber and Plastic Lines

<https://www.youtube.com/watch?v=jmlK6NpFuvC>

Sponge Blasting Metal Plates

<https://www.youtube.com/watch?v=WQ0eHRE6sW4>



COMPANY-OWNED EQUIPMENT LIST

- Absorbent Materials – Booms, Pads
- Air Compressors
- Air Filtration Units
- Air Movers
- Air-Purifying Respirators
- Airless Sprayers
- Analytical Kits
- Asbestos & Lead Abatement Equipment
- ATVs
- Box Trucks
- Bull Dozers
- Chemical Hose
- Cirrus ST22T Airplane
- Colormetric Monitoring Tubes
- Containment Booms
- Containment Equipment
- Decontamination Units
- Desiccant Dehumidifiers
- Diaphragm Acid Pumps
- Emergency Response Trailers
- Equipment Trucks
- Farrow Machines
- Fire Suppression Equipment
- First Aid Stations
- Flatbed Trailers
- Fork Lifts
- Generators
- Handheld Radios
- Ice Blaster
- Jon Boats
- Levels A-D PPE
- Mini-Excavators
- Mobile Office Trailers
- Multi-Gas Monitoring Equipment
- Overpacks
- Personnel Retrieval Systems
- Personnel Sampling Pumps
- Pickup Trucks
- Piper Malibu Airplane
- Portable Lighting
- Pressure Washers
- Product Neutralizer
- Product Transfer Equipment
- Pumping Systems
- Tri- and Quad-Axle Dump Trucks
- Refrigerant Dehumidifiers
- Roll-Off Containers
- ROVER-X Pipeline Camera System with WinCan Software
- Self-Contained Breathing Apparatus
- Skid Loaders
- Sponge Blaster
- Straight Frame Trucks
- Torches & Welders
- Trackhoes & Backhoes
- Traffic Control Equipment
- Vacuum Tankers
- Vacuum Trucks
- Water Trucks

* A complete detailed list can be provided upon request.

24-HR EMERGENCY RESPONSE
1-888-624-6555
CORPORATE OFFICE
1-800-815-0085
www.cci-env.com



708 MARTIN LUTHER KING JR. DRIVE
THOMASVILLE, NC 27360
PHONE 704-273-1500
FAX 704-273-1509

Updated: 12/7/22

State Licenses Held (where required):

Alabama:	General Contractor Asbestos Contractor
Delaware:	DOL Contractor
Florida:	Asbestos Contractor Mold Remediation General Contractor (pending through NC reciprocity)
Georgia:	Asbestos Contractor General Contractor (pending through NC reciprocity)
Louisiana:	Asbestos, Hazardous Material and Lead Contractor
North Carolina:	General Contractor Lead Renovator
South Carolina:	General Contractor Asbestos Contractor
Tennessee:	Asbestos Contractor General Contractor
Texas:	Asbestos Contractor Mold Remediation
Virginia:	Asbestos Contractor General Contractor – Asbestos, Highway/Heavy, Lead Abatement, Vessel Construction
West Virginia:	General Contractor Asbestos Contractor



CCI NAICS Codes for Classification as Small Business for Federal Work:

231112	Support Activities for Oil and Gas Operations
562111	Solid Waste Collection
562112	Hazardous Waste Collection
562211	Hazardous Waste Treatment & Disposal
562219	Other Non-Hazardous Waste Treatment & Disposal
562910	Remediation Services
562910	Environmental Remediation Services



ENVIRONMENTAL SERVICES

Office Locations:

Fayetteville, NC

3434 Black and Decker Road, Hope Mills, NC 28348 | 910.484.7000

Thomasville, NC

708 Martin Luther King Jr. Dr., Thomasville, NC 27360 | 704.273.1500

www.cci-env.com